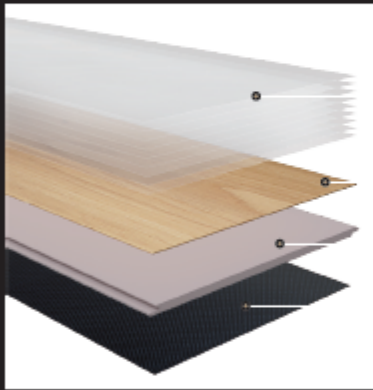


Technical Details

Quality Manufacturing

Roak Flooring uses multiple layers of different materials to create a flooring that not only provides beauty and comfort, but also durable enough to withstand the rigours of our daily activities.



Super UV Coating

Real Oak Wood Veneer

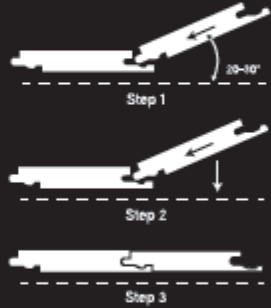
Mineral Core

IXPE



UNICLIC Locking Technology

Roak Flooring patented German locking technology allows stronger locking strength, ease of installation and seamless joints.



Distributed by



GOODHILL ENTERPRISE (S) PTE LTD
9 SUNGEI KADUT STREET 5

Contact Dealer:



TECHNICAL DATA

Symbol	Item	Standard	Requirement	Result
	Resistance to impact (Large diameter ball)	EN13329:2006	No crack	Pass
	Castor Chair test	EN425:2002	After 25,000 cycles: Delamination - None Appearance ≤ "Slight Change"	Pass
	Residual Indentation	EN ISO 24343-1:2012	≤0.1mm	0.02mm
	Resistance to staining	EN438-2:2016	5 (group 1&2) 4 (group 3)	5 (group 1&2) 5 (group 3)
	Dimensional stability and curling	ISO23999:2008	Length: 0.02% Width: 0.02% Curling: 0.02%	Length: 0.1% Width: 0.02% Curling: 0.02mm
	Swelling	EN317:1993		Mean swelling: 0.38% in thickness Max swelling: 0.51% in thickness
	water absorption	EN317:1993	24 hours immersion	Mean: 0.36% Max: 0.45%
	Thermal conductivity & Thermal resistance	EN 12667:2001	Not less than 0.4m2.k/w	0.174w/m.k 0.034/m2.k/w at25 C
	Soluble elements analysis in non-surface coating materials	EN71:1994		ND
	Phthalate contact test	ISO8124-6: 2018	DBP, DBP, BBP, DEHP, DNOP ≤ 0.001% DINP, DIDP ≤ 0.005%	ND
	Formaldehyde contact	EN717-1: 2004	Class E0: Release ≤0.05mg/m	ND Class E0

DURAFLOOR
Roak Series

Hybrid Engineered Wood Floor

ISO 9001 ISO 14001



DURAFLOOR

Hybrid Engineered Wood Flooring

Roak Series

